

FLEXLINE WALKOVER 2226 IP65

NGA2226W

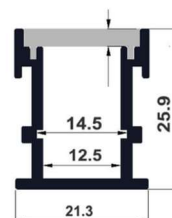
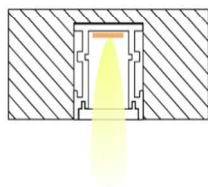
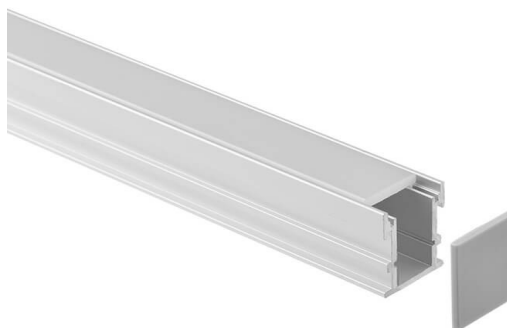
SPECIFICATION SHEET

PRODUCT DESCRIPTION

A recessed aluminium profile with an IP65 rating, designed for environments requiring moisture and dust resistance. Its deep-set structure conceals the light source, providing focused, low-glare illumination with a robust design suitable for walkover applications. Ideal for residential and commercial interiors, including bathrooms, kitchens, and floor installations, where durable, discreet lighting is needed.

PRODUCT NOTES

- When selecting an LED strip for this profile, we recommend a minimum LED density of 120 LEDs/m to achieve homogeneous, dot-free illumination, depending on diffuser type.
- A minimum of 1 LED strip runs per metre is recommended to ensure uniform light distribution and eliminate shadowing.
- Diffuser light transmittance: Milky 65–70%, Opal 75%, Frost 85–90%, Clear 95%.



TECHNICAL INFORMATION

Product Code	NGA2226W
Product Group	Aluminium Profile
Installation Type	Walkover
Light Distribution	Direct
Profile Material	6063-T5 Anodised Aluminium
Profile Finish	Silver / Black / White / Custom
Diffuser Material	PC
Diffuser Options	Opal / Milky / Frost / Clear

Profile Type	Straight
Dimensions	W 21.3 x H 25.9mm
Weight	0.48 kg/m
Max Power	20W/m
Max Strip Width	12mm
Beam Angle	120°
IP Rating	IP65
Accessories	Plastic end caps/ Metal mounting clips

UK & EUROPE HQ

T: +44 (0) 1276 686175 | E: info@nogreyarea.co.uk

MENA REGION HQ

T: +971 (0) 433 38300 | E: info@nogreyarea.me | www.no-grey-area.com

NGA