

FLEXLINE SURFACE 2626

NGA2626

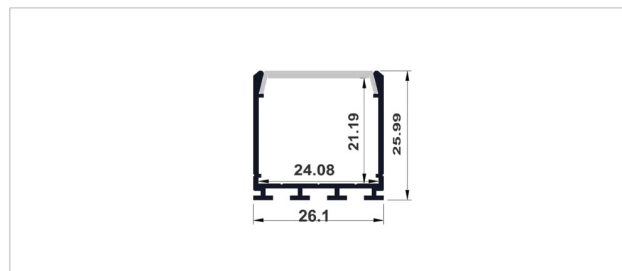
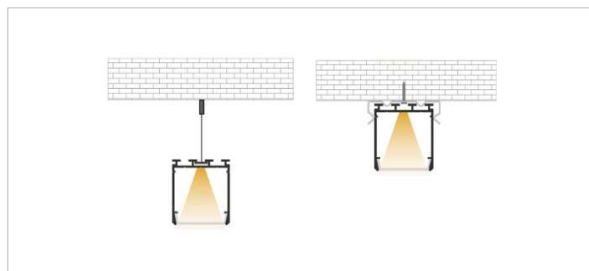
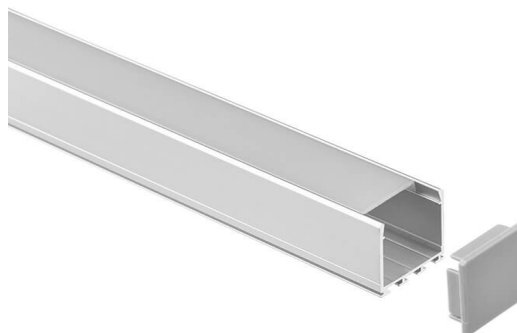
SPECIFICATION SHEET

PRODUCT DESCRIPTION

A surface-mounted or suspended aluminium profile designed for higher-output applications. The deep channel supports wider LED strips and promotes effective heat dissipation, while the flush diffuser ensures clean, uniform illumination. Suitable for task lighting, retail displays, and general architectural integration.

PRODUCT NOTES

- When selecting an LED strip for this profile, we recommend a minimum LED density of 120 LEDs/m to achieve homogeneous, dot-free illumination, depending on diffuser type.
- A minimum of 1 LED strip runs per metre is recommended to ensure uniform light distribution and eliminate shadowing.
- Diffuser light transmittance: Milky 65–70%, Opal 75%, Frost 85–90%, Clear 95%.



TECHNICAL INFORMATION

Product Code	NGA2626
Product Group	Aluminium Profile
Installation Type	Surface or Suspended
Light Distribution	Direct
Profile Material	6063-T5 Anodised Aluminium
Profile Finish	Silver / Black / White / Custom
Diffuser Material	PC
Diffuser Options	Opal / Milky / Frost / Clear

Profile Type	Straight
Dimensions	W 26.1 x H 25.99mm
Weight	0.3 kg/m
Max Power	20W/m
Max Strip Width	24mm
Beam Angle	120°
IP Rating	IP20
Accessories	Plastic end caps/ Metal mounting clips/ Suspension kit

UK & EUROPE HQ

T: +44 (0) 1276 686175 | E: info@nogreyarea.co.uk

MENA REGION HQ

T: +971 (0) 433 38300 | E: info@nogreyarea.me | www.no-grey-area.com

NGA