

FLEXLINE SURFACE 2530 30°

NGA2530A/30D

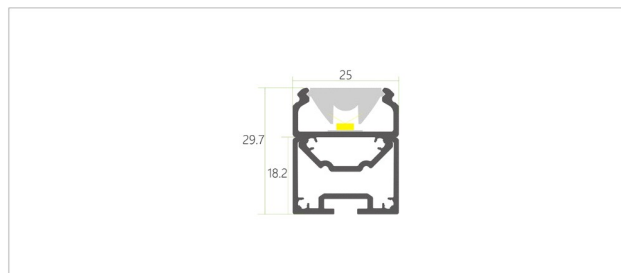
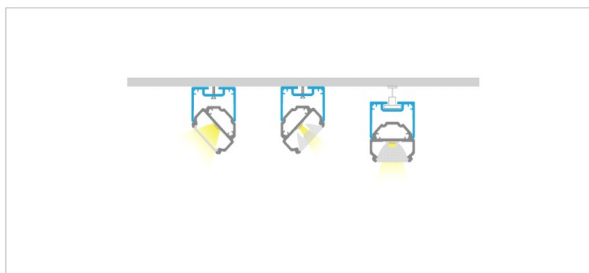
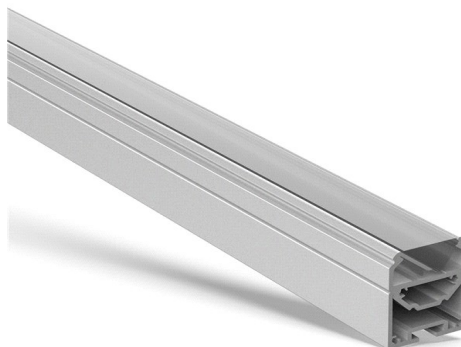
SPECIFICATION SHEET

PRODUCT DESCRIPTION

A surface-mounted or suspended aluminium profile featuring an adjustable beam angle of 30°. Its design facilitates directional lighting, making it suitable for applications such as wall grazing, accent lighting, and architectural highlights.

PRODUCT NOTES

- When selecting an LED strip for this profile, we recommend a minimum LED density of 180 LEDs/m to achieve homogeneous, dot-free illumination, depending on diffuser type.
- A minimum of 1 LED strip runs per metre is recommended to ensure uniform light distribution and eliminate shadowing.
- Diffuser light transmittance: Clear 95%.



TECHNICAL INFORMATION

Product Code	NGA2530A/30D
Product Group	Aluminium Profile
Installation Type	Surface or Suspended
Light Distribution	Direct
Profile Material	6063-T5 Anodised Aluminium
Profile Finish	Silver / Black / White / Custom
Diffuser Material	PMMA
Diffuser Options	Clear

Profile Type	Straight
Dimensions	W 25mm x H 29.7mm
Weight	0.687 kg/m
Max Power	28.8W/m
Max Strip Width	10mm
Beam Angle	30°
IP Rating	IP20
Accessories	Aluminium endcaps/ Joiners/ Suspension kit

UK & EUROPE HQ

T: +44 (0) 1276 686175 | E: info@nogreyarea.co.uk

MENA REGION HQ

T: +971 (0) 433 38300 | E: info@nogreyarea.me | www.no-grey-area.com

NGA