

FLEXLINE PLASTER-IN 9251

NGA9251

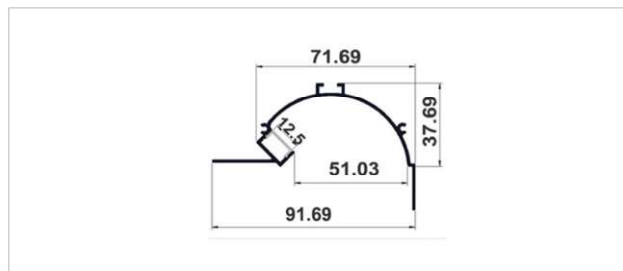
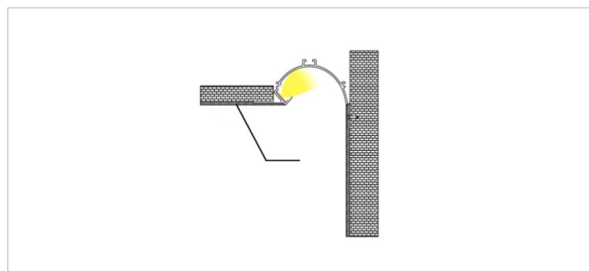
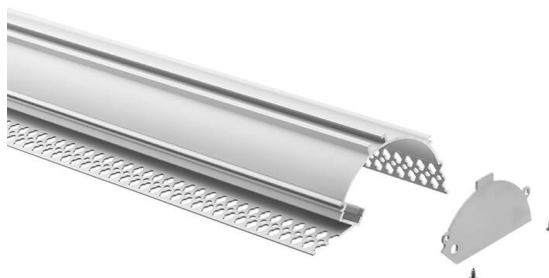
SPECIFICATION SHEET

PRODUCT DESCRIPTION

A plaster-in aluminium profile featuring a semi-circular form for installation between plasterboard ceilings and walls. Its curved structure allows for flush integration, creating a smooth transition with a direct line of diffused light. Ideal for architectural applications in residential and commercial interiors where soft, built-in corner illumination is desired.

PRODUCT NOTES

- When selecting an LED strip for this profile, we recommend a minimum LED density of 120 LEDs/m to achieve homogeneous, dot-free illumination, depending on diffuser type.
- A minimum of 1 LED strip runs per metre is recommended to ensure uniform light distribution and eliminate shadowing.
- Diffuser light transmittance: Milky 65–70%, Opal 75%, Frost 85–90%, Clear 95%.



TECHNICAL INFORMATION

Product Code	NGA9251
Product Group	Aluminium Profile
Installation Type	Plaster-In
Light Distribution	Direct / Side-angled
Profile Material	6063-T5 Anodised Aluminium
Profile Finish	Silver / Black / White / Custom
Diffuser Material	PC
Diffuser Options	Opal / Milky / Frost / Clear

Profile Type	Straight
Dimensions	W 91.69 x H 37.69mm
Weight	0.76 kg/m
Max Power	20W/m
Max Strip Width	12mm
Beam Angle	120°
IP Rating	IP20
Accessories	Aluminium end caps

UK & EUROPE HQ

T: +44 (0) 1276 686175 | E: info@nogreyarea.co.uk

MENA REGION HQ

T: +971 (0) 433 38300 | E: info@nogreyarea.me | www.no-grey-area.com

NGA