

FLEXLINE PLASTER-IN 4615

NGA4615

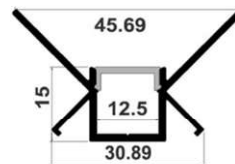
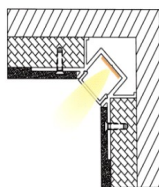
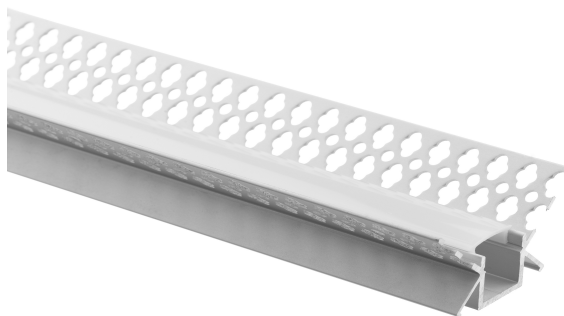
SPECIFICATION SHEET

PRODUCT DESCRIPTION

A plaster-in aluminium profile designed for 45° inward corner installation between plasterboard ceilings and walls. Its angled recessed structure allows for flush integration at junctions, producing clean, direct lines of light. Ideal for architectural applications in residential and commercial interiors where discreet, built-in illumination is desired.

PRODUCT NOTES

- When selecting an LED strip for this profile, we recommend a minimum LED density of 120 LEDs/m to achieve homogeneous, dot-free illumination, depending on diffuser type.
- A minimum of 1 LED strip runs per metre is recommended to ensure uniform light distribution and eliminate shadowing.
- Diffuser light transmittance: Milky 65–70%, Opal 75%, Frost 85–90%, Clear 95%.



TECHNICAL INFORMATION

| | |
|--------------------|---------------------------------|
| Product Code | NGA4615 |
| Product Group | Aluminium Profile |
| Installation Type | Plaster-In |
| Light Distribution | Direct |
| Profile Material | 6063-T5 Anodised Aluminium |
| Profile Finish | Silver / Black / White / Custom |
| Diffuser Material | PC |
| Diffuser Options | Opal / Milky / Frost / Clear |

| | |
|-----------------|------------------|
| Profile Type | Straight |
| Dimensions | W 45.69 x H 15mm |
| Weight | 0.41 kg/m |
| Max Power | 15W/m |
| Max Strip Width | 12mm |
| Beam Angle | 120° |
| IP Rating | IP20 |
| Accessories | Plastic end caps |

UK & EUROPE HQ

T: +44 (0) 1276 686175 | E: info@nogreyarea.co.uk

MENA REGION HQ

T: +971 (0) 433 38300 | E: info@nogreyarea.me | www.no-grey-area.com

NGA