

CRACKER EDGE

TILE SERIES

NGA

Cracker Acoustic Panel family is an ideal solution for commercial and educational areas. The Cracker promotes personalized and acoustically balanced workspaces without interruption to a collaborative environment. Products can be adjusted and moved to suit the dynamic requirement of a fast-paced modul office. This collection offers acoustic wall panels, ceiling panels, cloud lighting, and alternative acoustical solutions.

SPECIFICATION

- Composition: 100 % polyester (recycled PET appx. 50 %)
- Material Weight: 1300g /m² (+/- 5 %)
- Material Thickness: 6mm Natural & Mandarin colors (+/- 10 %)
- Panel Weight: 800 x800mm Natural: 1,50 kg / per pcs. (+/- 5%)
Mandarin: kg / per pcs. (+/- 5%)
800x1200mm Natural: 1,50 kg / per pcs. (+/- 5%)
Mandarin: 2,00 kg / per pcs. (+/- 5%)

PERFORMANCE

- Acoustic Rates: Natural: 0.70 NRC (EN-11654)
Mandarin: 0.90 NRC (EN-11654)
Natural + Feltfill: 0.80 NRC (EN-11654)
Mandarin + Feltfill: 1.00 NRC (EN-11654)
- Fire Rates: B, S1, d0 (EN-13501)
- Light fastness: 6+ (ISO-105 B02)
- Health : 99.9 % Antibacterial (ISO-20743)
- Formaldehyde-free (ISO-14184)
- Moisture Absorption: >0.03 % by weight (50°C/122°F at 90% relative humidity)
- Thermal insulating: 0,040 W/mK
- Abrasion: EN ISO 12947 / Performance 'A'

KEY FEATURES & BENEFITS

- Available in 7 Natural colors & 34 Mandarin colors.
- Highly durable providing long-term stability and performance.
- Safe, non-toxic, non-irritant & without red list chemical binders.
- Recycled and recyclable.
- 10 years warranty.

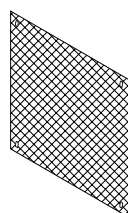
CARE

- Easy to clean with a damp cloth or vacuum cleaner.
- Indoor use only.

INSTALLATION

- Designed for easy assembly with 2 installation options. With the guidance of the montage template, neodymium magnets or velcro disks are screwed to the surface. Fix the brackets behind the panel to the magnets or velcro disks.

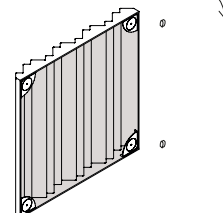
Assembly Template



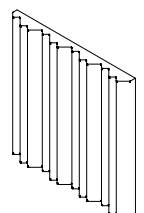
Magnets or Velcro



Back side - Brackets



Front side



DIMENSIONS (MM):

FL420	FL430
L: 800mm	L: 800mm
H: 800mm	H: 1200mm
W: 70mm	W: 70mm

