

# NGA



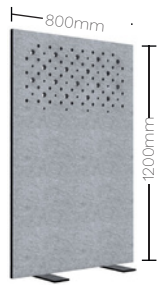
---

## RECTA

Product Sheet

# RECTA

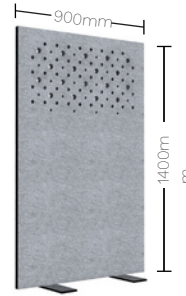
# NGA



FT100



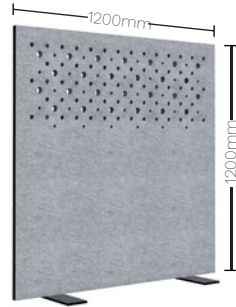
Natural: 12 of 0,5 lt PET bottles were used  
Mandarin: 15 of 0,5 lt PET bottles were used



FT110



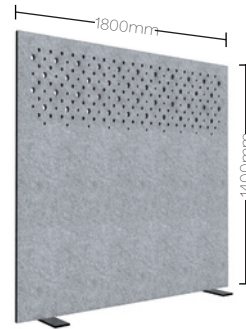
Natural: 16 of 0,5 lt PET bottles were used  
Mandarin: 20 of 0,5 lt PET bottles were used



FT120



Natural: 18 of 0,5 lt PET bottles were used  
Mandarin: 22 of 0,5 lt PET bottles were used



FT130



Natural: 32 of 0,5 lt PET bottles were used  
Mandarin: 38 of 0,5 lt PET bottles were used



## PRODUCT DETAILS

### Composition

100 % polyester (recycled PET appx. 50 %)

### Raw Material Weight

1300g/m<sup>2</sup> (+/- 5 %)

Code	Type	Dimensions (mm)	Product Weight	
			Natural	Mandarin
FT100	Recta Acoustic Divider Panel	W: 800 H: 1200 D: 32 Base: W: 400 L: 800 H:8	8 kg / per pcs. (+/-5 %)	8,50 kg / per pcs. (+/-5 %)
FT110	Recta Acoustic Divider Panel	W: 900 H: 1400 D: 32 Base: W: 400 L: 800 H:8	8,50 kg / per pcs. (+/-5 %)	9,50 kg / per pcs. (+/-5 %)
FT120	Recta Acoustic Divider Panel	W: 1200 H: 1200 D: 32 Base: W: 400 L: 800 H:8	9 kg / per pcs. (+/-5 %)	10 kg / per pcs. (+/-5 %)
FT130	Recta Acoustic Divider Panel	W: 1800 H: 1400 D: 32 Base: W: 400 L: 800 H:8	12 kg / per pcs. (+/-5 %)	13 kg / per pcs. (+/-5 %)

W: Width H: Height D: Depth L: Length



Acoustic



Fire Retardant



Eco-Friendly



Easy Clean



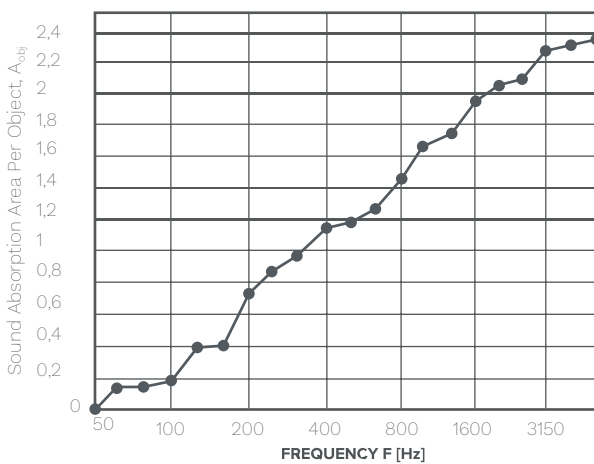
10 Year Guarantee

## PRODUCT CERTIFICATES

Acoustic Certificates ASTM C423 (US Standard) EN ISO 354 (EU Standard)	Environmental Labels and Declarations ISO 14025-2010: Labels / Result 'TIP III'
Certificate of Product Conformity EN 60598 (Lighting)	Ekoteks ISO 1833 / Result '100% Polyester' Fibre Composition
Certificate of Product Conformity EU 305/2011	ISO 9237:1995 / Result '387.9 l/m <sup>2</sup> /sn' Air Permeability
Abrasion EN ISO 12947 / Result Performance 'A'	ISO 4920:2012 / Result 'ISO 0' Spray Test
Declare Declare CdpH Standard method v1.2-201 / Result '10 + Years' (LEED v4)	ISO 14419:2010 / Result '0 D' Oil Repellency
Moisture Resistance EN 13964 2014 / Result 'Class B'	ISO 105 B02:1994 / Result '6+' Light Fastness Grade
Classification of Reaction to Fire EN 13501 / Result 'B-s1,d0' EN ISO/IEC 17025 / Result 'Class A'	SNV 195 651:1968 / Result '1' Sensoric Odour
The Quality Management System ISO 9001:2015	ISO 14184-1:2011 Low VOC / Result 'N.D' Formaldehyde-Free
The Environmental Management System ISO 14001:2015	ISO 20743:2013 / Result 'Strong Efficacy' %99.9 Antibacterial structure
Uv Exposure Testing ISO 4892-3:2016 / Result '5-4'	Superior thermal insulating 0,040 W/mK
Bleach Cleanable ISO 105E03 / Result '5-4'	MAS Certified Green CDPH Standard Method v1.2, Eligible for LEED v4
	Material Safety

## PRODUCT ACOUSTIC RESULT

### NATURAL COLOR

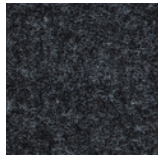


Aobj @1000 Hz: 1.7

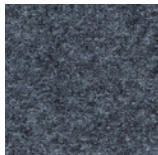
# RECTA

## PRODUCT COLOUR OPTIONS

### NATURAL COLOURS



Shadow Black  
FLT03



Antrasit  
FLT01



Ash Gray  
FLT04



Silver Gray  
FLT02



Moon Beige  
FLT05

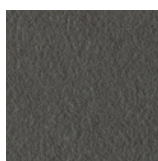


Stone Beige  
FLT08



Ivory Beige  
FLT06

### MANDARIN COLOURS



FLM33



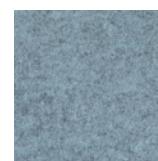
FLM03



FLM24



FLM20



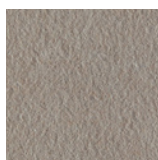
FLM07



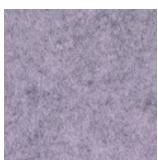
FLM11



FLM31



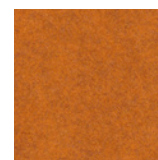
FLM32



FLM03



FLM23



FLM25



FLM06



FLM09



FLM13



FLM26



FLM01



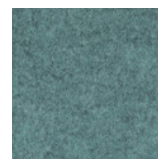
FLM22



FLM17



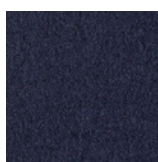
FLM27



FLM12



FLM15



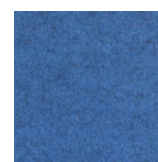
FLM30



FLM21



FLM19



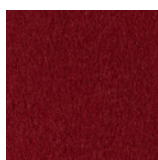
FLM05



FLM10



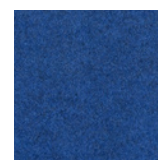
FLM16



FLM28



FLM18



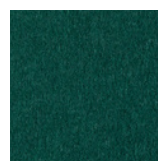
FLM04



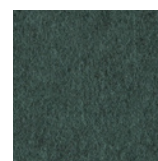
FLM08



FLM14



FLM29



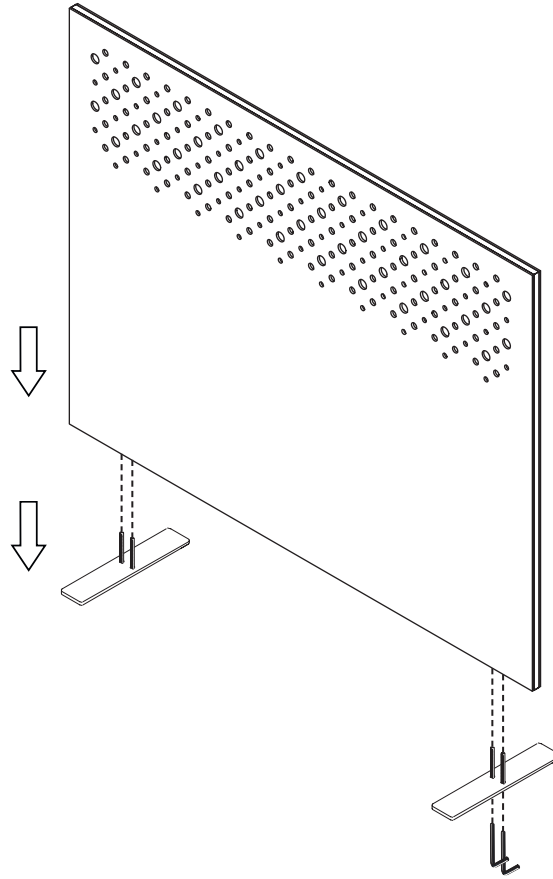
FLM34



# RECTA

# NGA

## PRODUCT INSTALLATION

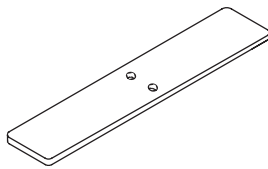


---

## PRODUCT CONTENTS



Screw M8  
60mm



Stand



Allen Key

RECTA

NGA

REFERENCE PROJECT



Bayer Turkey Headquarter



Bayer Turkey Headquarter

## ABOUT PET FELT

- PET Felt is 100% polyester material %50 recycled from Pet Bottles.
- The material is produced with nonwoven technology without any chemical application from the production process to the end user.
- Thanks to its recycled content from the pet bottle, it does not contain more than 0.02% of the ambient moisture.
- Therefore, it also has an anti-bacterial and partially anti-allergic structure and is naturally hydrophobic. In this way, oil and water repellent, sun-proof, can be used in humid areas can be used in all indoor spaces.

PET Felt is easy to clean and maintain.

## MAINTENANCE & CEILING INSTRUCTIONS

- Indoor use only
- Cleaning methods:



Wipe clean with a damp cloth



Vacuum regularly



Bleach cleanable (only natural colors)

- If a wet spill occurs,
  - Dry the liquid with a dry cloth as soon as possible to prevent absorption.
  - To remove stains, copious amounts of water can be applied to the surface with a cloth without rubbing. Generally, water is sufficient to remove light stains.
  - If the stain does not come off with water, a mild detergent may be used. Avoid from the hard detergents.
  - If the product is portable and small enough, it is best to take the services of a professional dry cleaning company
  - Lastly, dry it with a dry towel while still wet.
- If a stubborn stains occurs,
  - Collect the stain with a dry cloth as soon as possible to prevent absorption.
  - To remove stains, firstly apply copious amounts of water to the surface with a cloth without rubbing.
  - If the stain does not come off with water, a mild detergent should be used. Avoid from the hard detergents.
  - If the product is portable and small enough, it is best to take the services of a professional dry cleaning company after the first intervention
  - Lastly, dry it with a dry towel while still wet.
- During cleaning process, avoid excessive friction and rubbing as it can continue the felting process and change the appearance of the felt surface.
- It is recommended that the cleaning method be tested in an inconspicuous area.