

# BOWL

## PENDANT LIGHTING - SUSPENDED WIRE

# NGA

### SPECIFICATION

- Composition: 100 % polyester (recycled PET appx. 50 %)
- Material Weight: 1300g /m<sup>2</sup> (+/- 5 %)
- Material Thickness: 6mm Natural & Mandarin colors (+/- 10 %)
- Product Weight: Natural: kg per pcs. (+/- %5)  
Mandarin: kg per pcs. (+/- %5)

### DIMENSIONS (MM):

- Ø: 600mm
- H: 180mm
- Lighting Fixture: Ø: 300mm

### PERFORMANCE

- Fire Rates: B, S1, d0 (EN-13501)
- Light fastness: 6+ (ISO-105 B02)
- Health : 99.9 % Antibacterial (ISO-20743)
- Formaldehyde-free (ISO-14184)
- Moisture Absorption: >0.03 % by weight (50°C/122°F at 90% relative humidity)
- Thermal insulating: 0,040 W/mK
- Abrasion: EN ISO 12947 / Performance 'A'

### KEY FEATURES & BENEFITS

- Available in 7 Natural colours & 34 Mandarin colours.
- Highly durable providing long-term stability and performance.
- Safe, non-toxic, non-irritant & without red list chemical binders.
- Recycled and recyclable.
- 10 years warranty.

### CARE

- Easy to clean with a damp cloth or vacuum cleaner.
- Indoor use only.

### INSTALLATION

- Designed for easy assembly with adjustable ceiling mount units.



LIGHT SOURCE SPECIFICATION	
Wattage	25W
Input Voltage	220 - 240V AC
Input Frequency	50 / 60 Hz
Lumen output	2500 lm
*** Colour Temperature	2700K, 3000K, 4000K options
Colour Rendering Index	90CRI
Unified Glare Rating	UGR<19
Dimmable	On/Off, DALI, Push Dim, Bluetooth, Phase Cut
Lighting Type	Direct Lighting



\*\*\* Bowl pendant lightings are available with Mandarin colors at outer surface.  
 \*\*\* Lighting source standard diffuser is Micro Prismatic. Opal PC diffuser option is also available.  
 \*\*\* Color temperatures of lighting sources can be customised.



# BOWL

## PENDANT LIGHTING - SUSPENDED ROD

### SPECIFICATION

- Composition: 100 % polyester (recycled PET appx. 50 %)
- Material Weight: 1300g /m<sup>2</sup> (+/- 5 %)
- Material Thickness: 6mm Natural & Mandarin colours (+/- 10 %)
- Product Weight: Natural: kg per pcs. (+/- %5)  
Mandarin: kg per pcs. (+/- %5)

### DIMENSIONS (MM):

Ø: 600mm  
H: 180mm  
Lighting Fixture: Ø: 300mm

### PERFORMANCE

- Fire Rates: B, S1, d0 (EN-13501)
- Light fastness: 6+ (ISO-105 B02)
- Health : 99.9 % Antibacterial (ISO-20743)
- Formaldehyde-free (ISO-14184)
- Moisture Absorption: >0.03 % by weight (50°C/122°F at 90% relative humidity)
- Thermal insulating: 0,040 W/mK
- Abrasion: EN ISO 12947 / Performance 'A'

### KEY FEATURES & BENEFITS

- Available in 7 Natural colors & 34 Mandarin colors.
- Highly durable providing long-term stability and performance.
- Safe, non-toxic, non-irritant & without red list chemical binders.
- Recycled and recyclable.
- 10 years warranty.

### CARE

- Easy to clean with a damp cloth or vacuum cleaner.
- Indoor use only.

### INSTALLATION

- Designed for easy assembly with adjustable ceiling mount units.



LIGHT SOURCE SPECIFICATION	
Wattage	25W
Input Voltage	220 - 240V AC
Input Frequency	50 / 60 Hz
Lumen output	2500 lm
*** Colour Temperature	2700K, 3000K, 4000K options
Colour Rendering Index	90CRI
Unified Glare Rating	UGR<19
Dimmable	On/Off, DALI, Push Dim, Bluetooth, Phase Cut
Lighting Type	Direct Lighting



\*\*\* Bowl pendant lightings are available with Mandarin colors at outer surface.  
 \*\*\* Lighting source standard diffuser is Micro Prismatic. Opal PC diffuser option is also available.  
 \*\*\* Color temperatures of lighting sources can be customised.



# BOWL

## WALL MOUNTED



### SPECIFICATION

- Composition: 100 % polyester (recycled PET appx. 50 %) Material
- Weight: 1300g /m<sup>2</sup> (+/- 5 %)
- Material Thickness: 6mm Natural & Mandarin colours (+/- 10 %)
- Product Weight: Natural: kg per pcs. (+/- %5)  
Mandarin: kg per pcs. (+/- %5)

### DIMENSIONS (MM):

Ø: 600mm  
H: 115mm

Lighting Fixture: Ø: 300mm

### PERFORMANCE

- Fire Rates: B, S1, d0 (EN-13501)
- Light fastness: 6+ (ISO-105 B02)
- Health : 99.9 % Antibacterial (ISO-20743)
- Formaldehyde-free (ISO-14184)
- Moisture Absorption: >0.03 % by weight (50°C/122°F at 90% relative humidity)
- Thermal insulating: 0,040 W/mK
- Abrasion: EN ISO 12947 / Performance 'A'

### KEY FEATURES & BENEFITS

- Available in 7 Natural colors & 34 Mandarin colors.
- Highly durable providing long-term stability and performance.
- Safe, non-toxic, non-irritant & without red list chemical binders.
- Recycled and recyclable.
- 10 years warranty.

### CARE

- Easy to clean with a damp cloth or vacuum cleaner.
- Indoor use only.

### INSTALLATION

- Designed for easy assembly with adjustable ceiling mount units.



Direct Lighting Option

Direct + Indirect Lighting Option



LIGHT SOURCE SPECIFICATION	
Wattage	25W
Input Voltage	220 - 240V AC
Input Frequency	50 / 60 Hz
Lumen output	2500 lm
*** Color Temperature	2700K, 3000K, 4000K options
Color Rendering Index	90CRI
Unified Glare Rating	UGR<19
Dimmable	On/Off, DALI, Push Dim, Bluetooth, Phase Cut
Lighting Type	Direct / Direct + Indirect Lighting



\*\*\* Bowl pendant lightings are available with Mandarin colors at outer surface.  
 \*\*\* Lighting source standard diffuser is Micro Prismatic. Opal PC diffuser option is also available.  
 \*\*\* Color temperatures of lighting sources can be customised.



# BOWL

## SURFACE MOUNTED

### SPECIFICATION

- Composition: 100 % polyester (recycled PET appx. 50 %)
- Material Weight: 1300g /m<sup>2</sup> (+/- 5 %)
- Material Thickness: 6mm Natural & Mandarin colours (+/- 10 %)
- Product Weight: Natural: kg per pcs. (+/- %5)  
Mandarin: kg per pcs. (+/- %5)

### DIMENSIONS (MM):

Ø: 600mm  
H: 115mm  
Lighting Fixture: Ø: 300mm

### PERFORMANCE

- Fire Rates: B, S1, d0 (EN-13501)
- Light fastness: 6+ (ISO-105 B02)
- Health : 99.9 % Antibacterial (ISO-20743)
- Formaldehyde-free (ISO-14184)
- Moisture Absorption: >0.03 % by weight (50°C/122°F at 90% relative humidity)
- Thermal insulating: 0,040 W/mK
- Abrasion: EN ISO 12947 / Performance 'A'

### KEY FEATURES & BENEFITS

- Available in 7 Natural colors & 34 Mandarin colors.
- Highly durable providing long-term stability and performance. Safe, non-toxic, non-irritant & without red list chemical binders. Recycled and recyclable.
- 10 years warranty.

### CARE

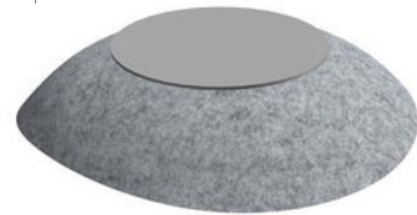
- Easy to clean with a damp cloth or vacuum cleaner.
- Indoor use only.

### INSTALLATION

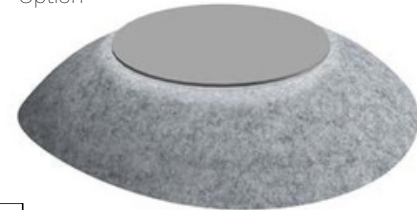
- Designed for easy assembly with adjustable ceiling mount units.



Direct Lighting Option



Direct + Indirect Lighting Option



LIGHT SOURCE SPECIFICATION	
Wattage	25W
Input Voltage	220 - 240V AC
Input Frequency	50 / 60 Hz
Lumen output	2500 lm
*** Color Temperature	2700K, 3000K, 4000K options
Color Rendering Index	90CRI
Unified Glare Rating	UGR<19
Dimmable	On/Off, DALI, Push Dim, Bluetooth, Phase Cut
Lighting Type	Direct / Direct + Indirect Lighting



\*\*\* Bowl pendant lightings are available with Mandarin colors at outer surface.

\*\*\* Lighting source standard diffuser is Micro Prismatic. Opal PC diffuser option is also available.

\*\*\* Color temperatures of lighting sources can be customised.